

# House and Land Package AVAILABLE



Indoor pictures for illustration purposes only

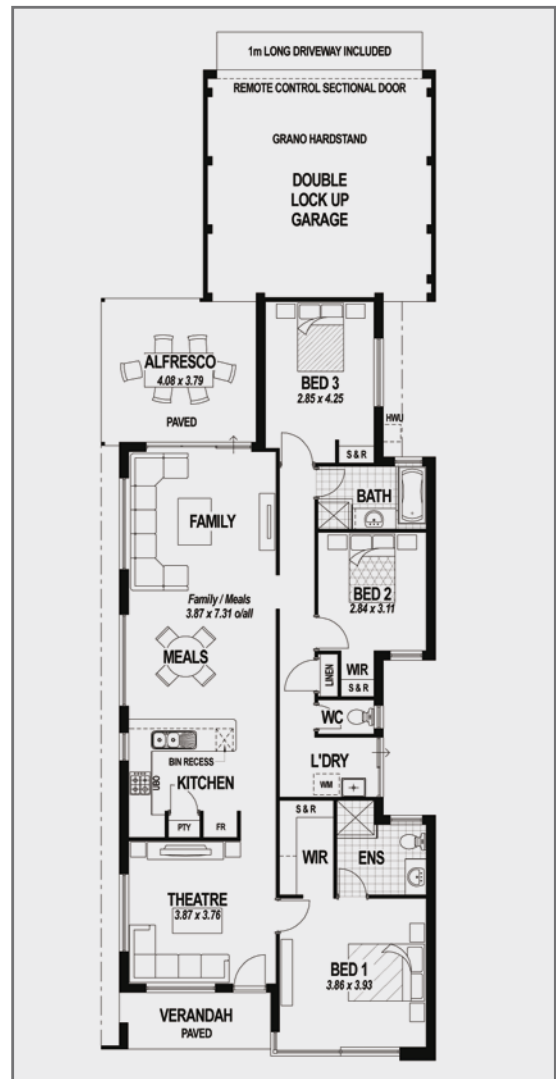
## The Bondi House and Land Package from \$287,613<sup>#</sup>



Suits 10m rear laneway lots - titled lots available

Ready to build now in Byford's most established estate. Strategically located centrally to provide easy access to major transport routes and amenities. The estate has family friend features such as major parklands, views of the scarp and easy access to a day care and primary school.

- Colourbond roof.
- Chef's kitchen with stainless steel oven, hotplate and rangehood
- Paved veranda and alfresco
- 1m paved driveway
- Overhead kitchen cupboards and built in pantry
- 30c ceilings throughout house
- All rooms have robes
- Separate theatre room
- Double remote garage
- Fencing & landscaping package\*



**# FINANCE AVAILABLE**    # qualified first home buyers only (from \$294,613 without the grant)    \* Developer Bonus (Conditions Apply)

DISCLAIMER: Lot subject to availability at time of enquiry. Prices and availability subject to change without notice. Whilst every care has been taken with the preparation of this document the contents of this document are in no way warranted by Byford Central. Packages are subject to terms and conditions contact your Byford Central representative for further details.

**Call now to see if you qualify FREECALL: 1800 BYFORD  
or call Rondelle on 0402 283 911 and Angie on 0402 776 617**