

House and Land Package AVAILABLE



The Oxford Home and Land Package from \$303,660[#]

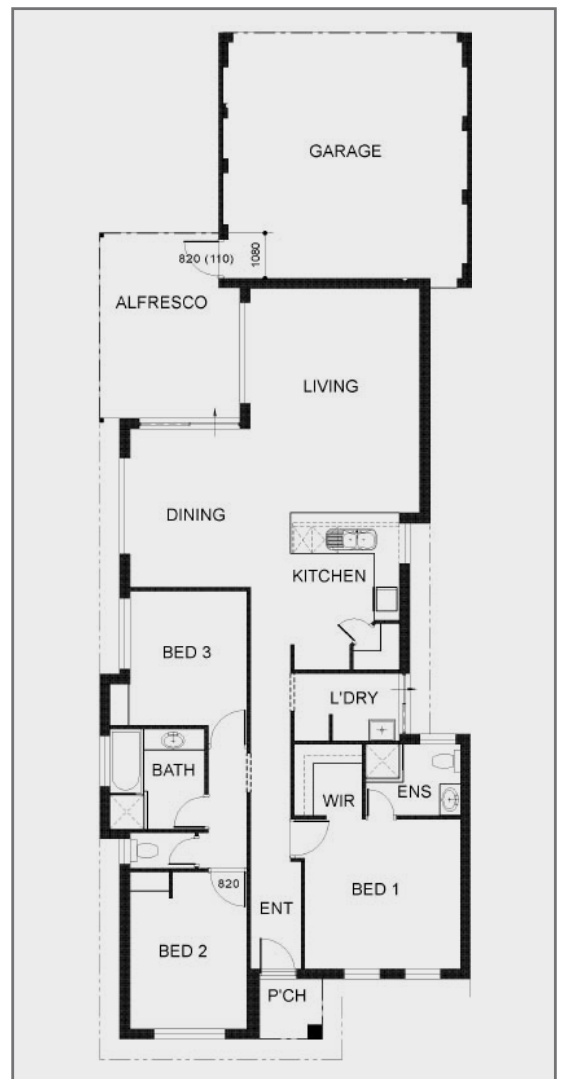


Minimum 10m frontage - titled lots available

Lots opposite major new Park!

Ready to build now in Byford's most established estate. Strategically located centrally to provide easy access to major transport routes and amenities. The estate has family friend features such as major parklands, views of the scarp and easy access to a day care and primary school. Package includes:

- Tiled roof
- Alfresco under main roof
- Brick paving to drive, alfresco & verandah
- Double garage
- Floor coverings
- Flyscreens to sliding doors & windows
- Window treatments
- Siteworks allowance
- Fencing & landscaping package*



FINANCE AVAILABLE # qualified first home buyers only (from \$310,660 without the grant) * Developer Bonus (Conditions Apply)

DISCLAIMER: Lot subject to availability at time of enquiry. Prices and availability subject to change without notice. Whilst every care has been taken with the preparation of this document the contents of this document are in no way warranted by Byford Central. Packages are subject to terms and conditions contact your Byford Central representative for further details.

Call now to see if you qualify FREECALL: 1800 BYFORD
or call Rondelle on 0402 283 911 and Angie on 0402 776 617