

House and Land Package AVAILABLE



picture for illustration purposes only

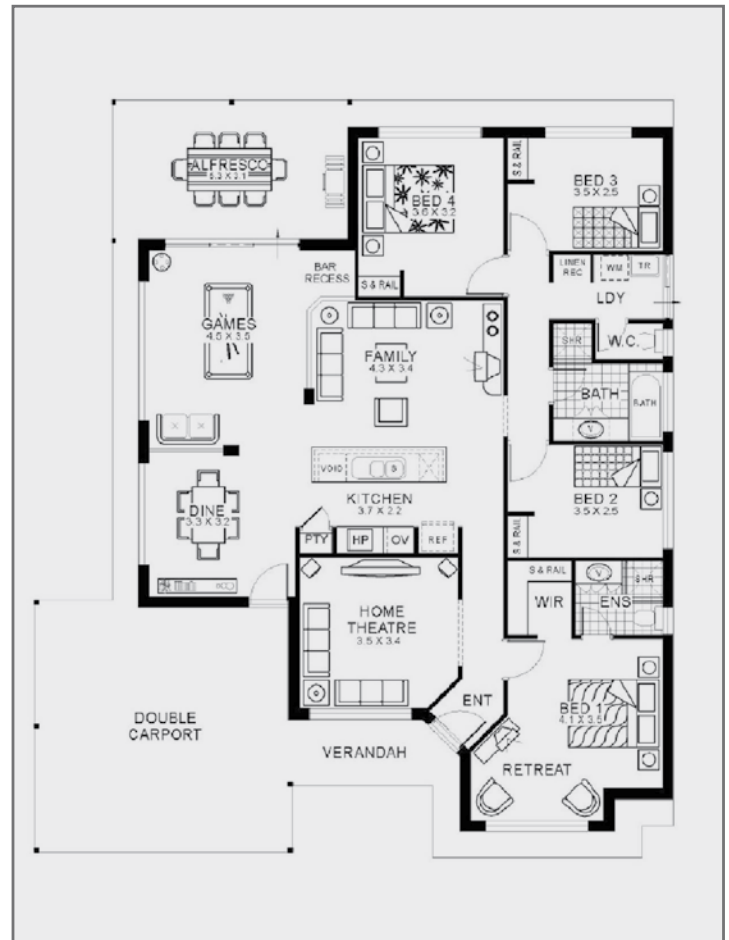


The Aussie Alfresco Home and Land Package from \$312,200[#]

Minimum 17m frontage - titled lots available

Ready to build now in Byford's most established estate. Strategically located centrally to provide easy access to major transport routes and amenities. The estate has family friendly features such as major parklands, views of the scarp and easy access to a day care and primary school. Package includes:

- Tiled roof
- Alfresco under main roof
- Brick paving to drive, alfresco & verandah
- Double carport
- Floor coverings
- Window treatments
- Fly screens to sliding doors & windows
- Stainless Steel appliances
- Site works allowance
- 25 Year Structural Guarantee
- Fencing & landscaping*



[#] FINANCE AVAILABLE

[#] Qualified First Home Buyers only (from \$343,000 without the grant)

* Developer Bonus (Conditions Apply)

DISCLAIMER: Lot subject to availability at time of enquiry. Prices and availability subject to change without notice. Whilst every care has been taken with the preparation of this document the contents of this document are in no way warranted by Byford Central. Packages are subject to terms and conditions contact your Byford Central representative for further details. Statutory charges not included in pricing.

Call now to see if you qualify FREECALL: 1800 BYFORD
or call Rondelle on 0402 283 911 and Angie on 0402 776 617