

# House and Land Package AVAILABLE

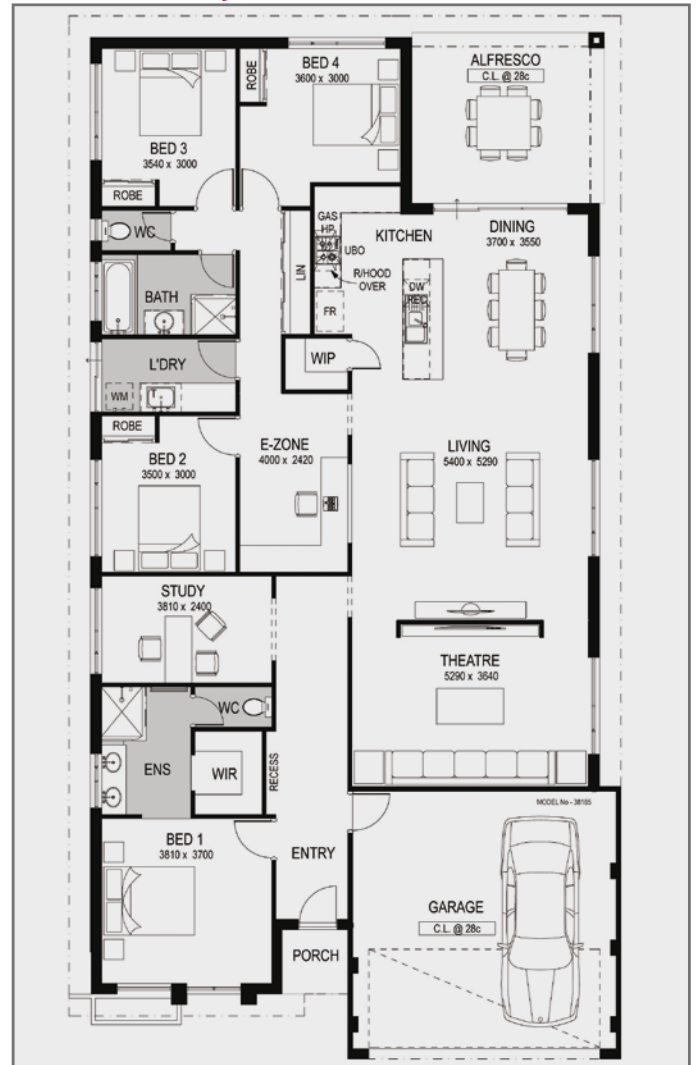


artist impression of actual elevation for illustrative purposes only

## Conquest House and Land Package from \$336,000<sup>#</sup>

Minimum frontage 15m - titled lots available  
The Conquest combines industry leading quality specifications and stylish yet practical design to give you a spacious cleverly appointed family home. Building with Australia's largest home builder means you will always get an unbeatable list of features:

- Spacious & practical design
- 4 bed, study, E Zone & 2 bathrooms
- Clear glazed framed pivot doors to bathrooms
- BIR's with vinyl clad panel doors, shelves & hanging rails to all bedrooms
- Carpet/vinyl floor coverings
- Modern spacious kitchen with Laminex Freestyle solid surface benchtops
- 25° pitch roof with choice of colorbond/roof tiles
- 300L solar gas boosted hot water system
- Window treatments
- Fencing & landscaping\*



# FINANCE AVAILABLE

# Qualified First Home Buyers only (from \$343,000 without the grant)

\* Developer Bonus (Conditions Apply)

DISCLAIMER: Lot subject to availability at time of enquiry. Prices and availability subject to change without notice. Whilst every care has been taken with the preparation of this document the contents of this document are in no way warranted by Byford Central. Packages are subject to terms and conditions contact your Byford Central representative for further details. Statutory charges not included in pricing.

Call now to see if you qualify FREECALL: 1800 BYFORD  
or call Rondelle on 0402 283 911 and Angie on 0402 776 617